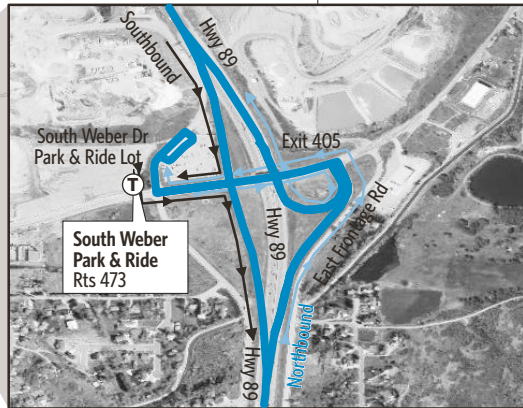
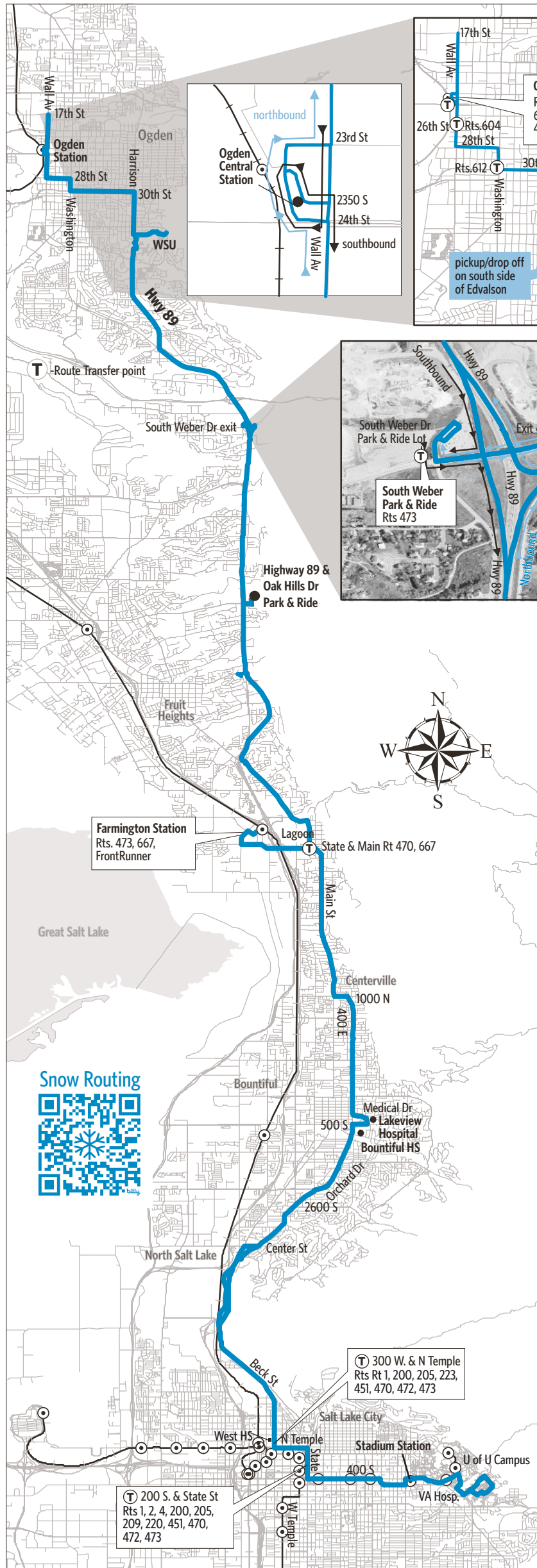
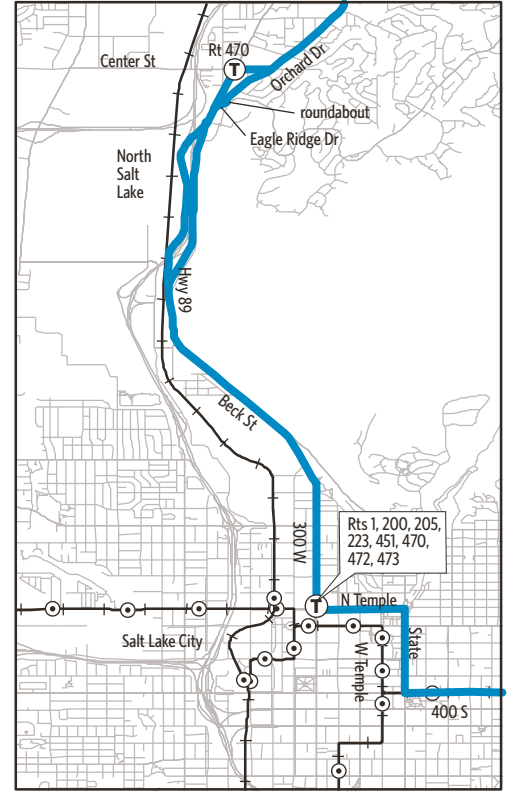
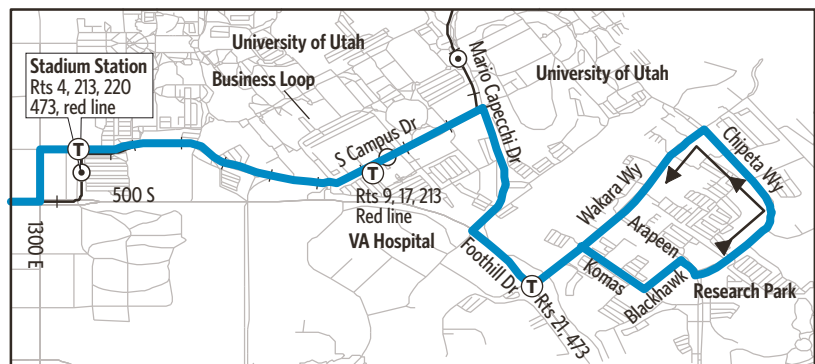
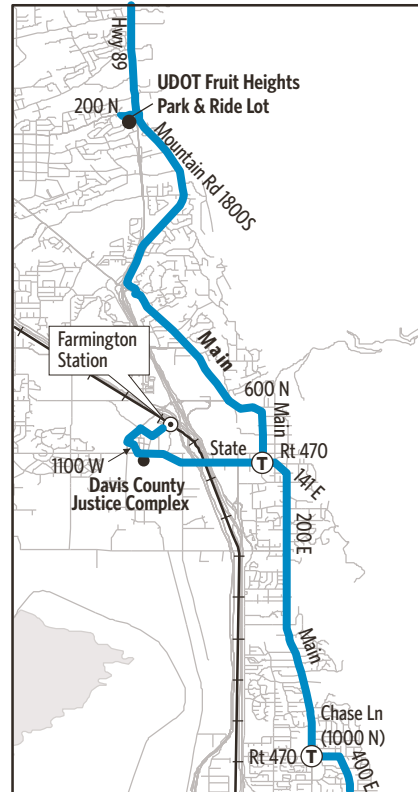


Route 455 - Weber State/Davis Co./UofU



Snow Routing



For Information Call 801-RIDE-UTA (801-743-3882)
outside Salt Lake County 888-RIDE-UTA (888-743-3882)
www.rideuta.com

455

WSU/Davis Co./U of U

HOW TO USE THIS SCHEDULE

Determine your timepoint based on when you want to leave or when you want to arrive. Read across for your destination and down for your time and direction of travel. A route map is provided to help you relate to the timepoints shown. Weekday, Saturday & Sunday schedules differ from one another.

UTA SERVICE DIRECTORY

- General Information, Schedules, Trip Planning and Customer Feedback: 801-RIDE-UTA (801-743-3882)
- Outside Salt Lake County call 888-RIDE-UTA (888-743-3882)
- For 24 hour automated service for next bus available use option 1. Have stop number and 3 digit route number (use 0 or 00 if number is not 3 digits).
- Pass By Mail Information 801-287-2204
- For Employment information please visit <http://www.rideuta.com/careers/>
- Travel Training 801-287-2275

LOST AND FOUND

Weber/South Davis: 801-626-1207 option 3
Utah County: 801-227-8923
Salt Lake County: 801-287-4664

FARES

Exact Fare is required. Fares are subject to change.

ACCESSIBLE SERVICE

Wheelchair accessible buses are available on all routes. Alternate format schedules are available upon request. Telephone communication for deaf/hearing impaired persons is available by dialing 711.

TRANSFERS

Upon payment of a fare, a transfer is good for travel in any direction, including return trip, for two (2) hours until the time cut. The value of a transfer towards a fare on a more expensive service is the regular cash fare.

BIKES ON BUSES

The Bikes on Buses service is available on all buses, except Paratransit.

HOLIDAYS

Please check rideuta.com for holiday service information.

SNOW ROUTING

Please check rideuta.com/snow for information.



Research Park, U of U
Salt Lake, North Salt Lake
Bountiful, Centerville
Farmington Station
Weber State University
Ogden Station



